

AIPHONE

NIM SYSTEM



A simple communication system for medical and commercial fields.

SYSTEM FEATURES

- All call and group call
- Call log
- Powerful sound
- 20/40/60/80 call capacity
- Large variety of sub stations
- Durability and reliability



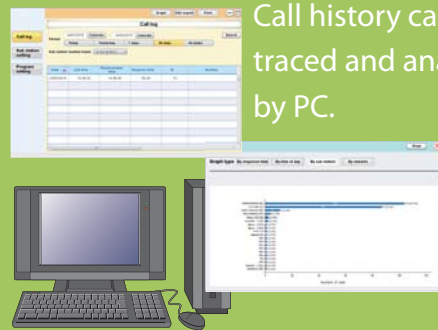
atisfying a broad range of needs in

NURSE CALL SYSTEM

Provides reliable communication and enhances the quality of care.



Individual communication with patients is possible by using the bedside handheld sub station.



Call history can be traced and analysed by PC.

COMMUNICATION SYSTEM

Used in a wide range of environments such as highway toll gates and schools.



Outdoor sub station and newly designed indoor sub station.

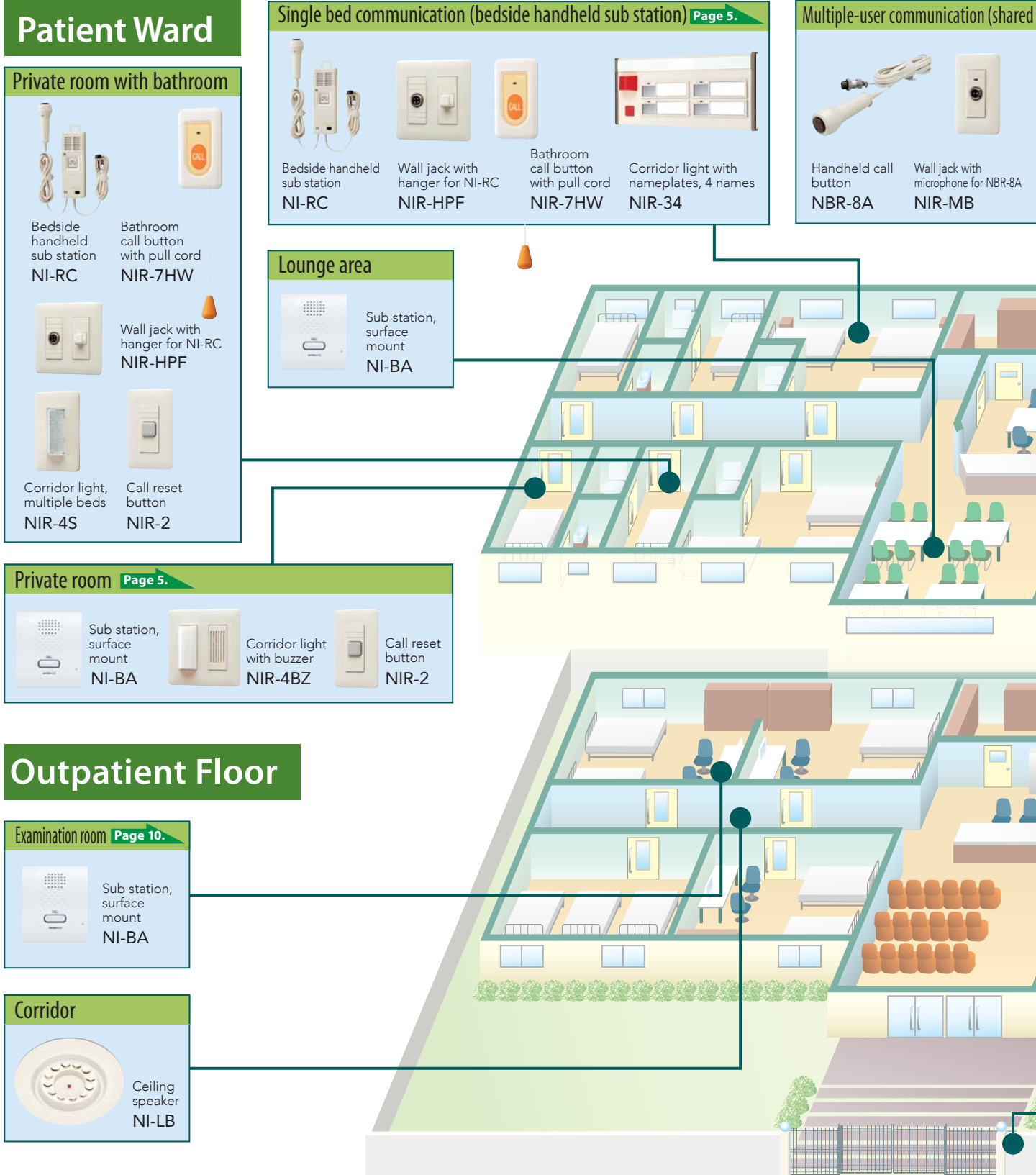


Broadcast option is available.

Necessary communication for healthcare facilities.

< Examples of System Configuration >

NIM can be used as a nurse call system for providing calls from patient rooms and bathrooms to nurse stations. Various system configurations offer application flexibility and sophistication. PC connection makes it possible to check call history.




stations.

speaker and individual microphone) Page 7.

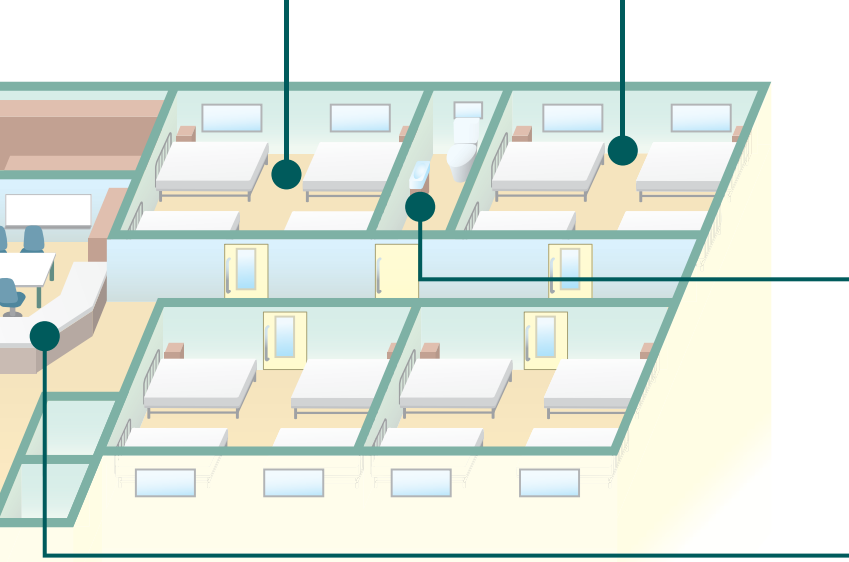


Ceiling speaker NI-LB
Corridor light, single bed NIR-4
Call reset button NIR-2

Multiple-user communication (ceiling speaker and ceiling microphone) Page 7.



Handheld call button NBR-8A
Wall jack for NBR-8A NIR-1
Ceiling microphone NI-SB
Ceiling speaker NI-LB
Corridor light, single bed NIR-4
Call reset button NIR-2



Bathroom Page 9.

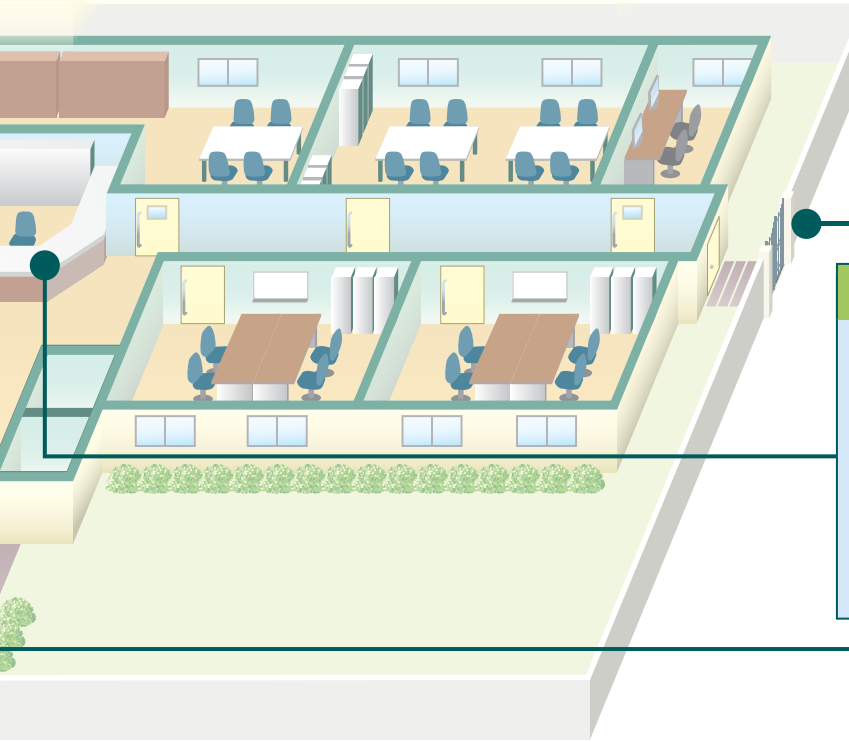


Corridor light, single bed NIR-4
Call reset button NIR-2
Bathroom call button with pull cord NIR-7HW

Nurse station Page 11.




Master station, 40-call NIM-40B
Power supply IS-PU
Call log software NI-SOFT + PC (Third party product)



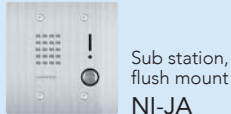
Outpatient admissions

Master station, 20-call NIM-20B




Power supply IS-PU

Employee service entrance Page 10.



Sub station, flush mount NI-JA

General service entrance Page 10.

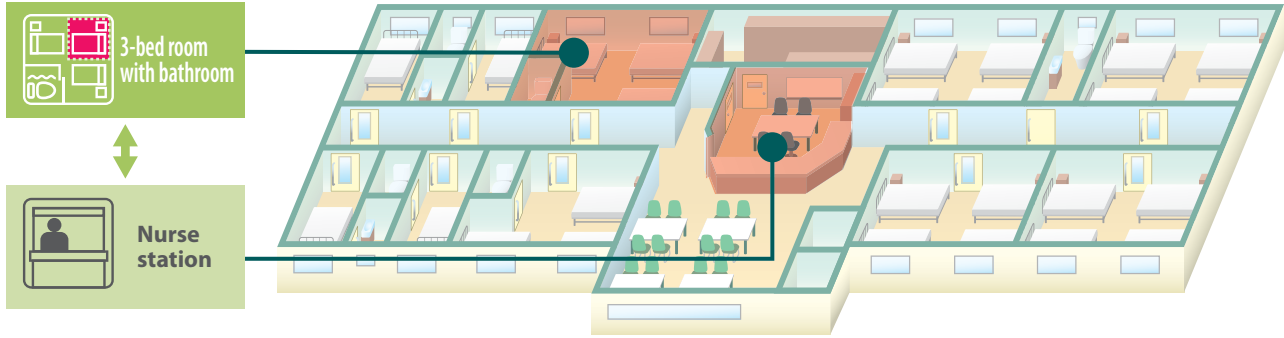


Sub station, flush mount NI-JA

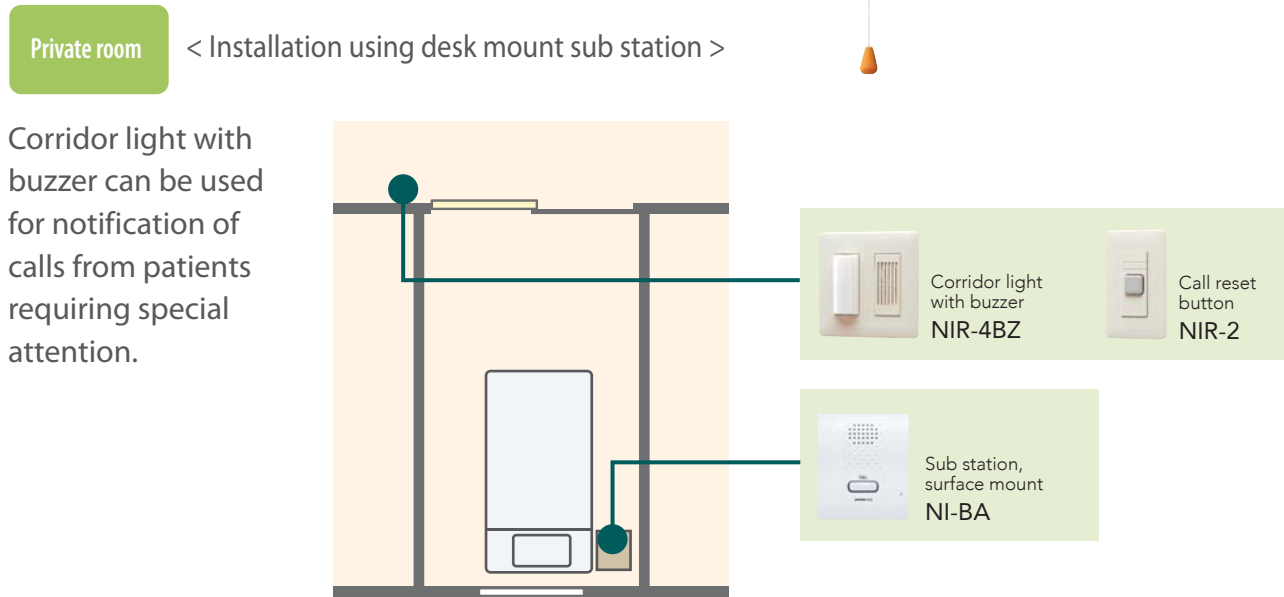
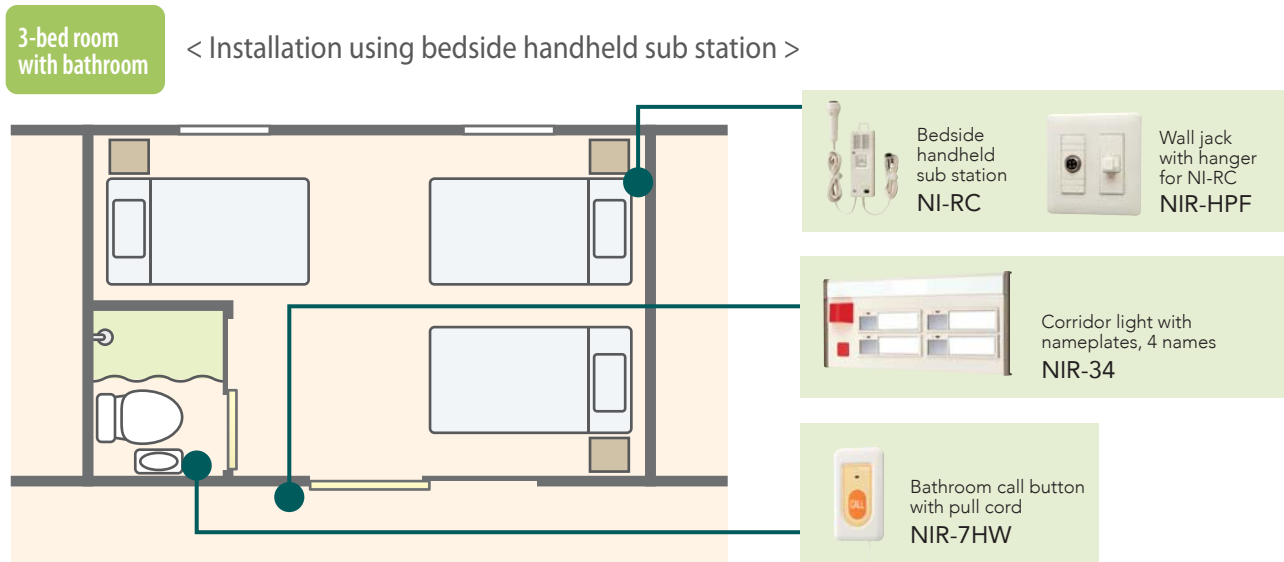
Personal communication ensures the priv

Single bed communication :

Communication system using a speaker and a microphone at each bed.

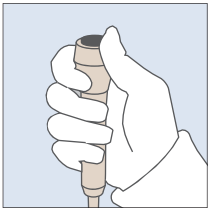


■ Examples of Equipment Application




afety of your patients.


■ Features

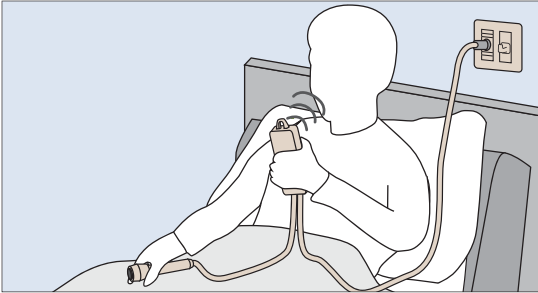


Push the call button.

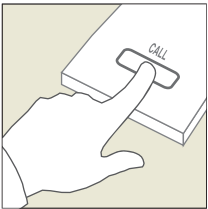


Bedside handheld sub station
NI-RC






Bedside handheld sub station is used to communicate with the nurse station.


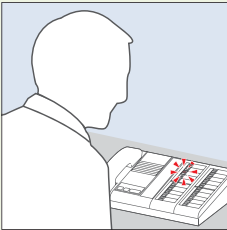



The desk mount sub station can be used for calls and communication also.



Sub station, surface mount
NI-BA


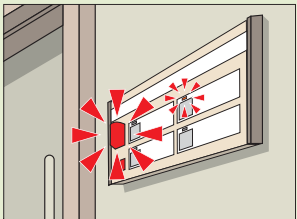
When a call is received, the indicator blinks to notify where the call is made from.



Master station

Lighted lamps in corridor enable nurses to notice calls easily and respond to the patient quickly.

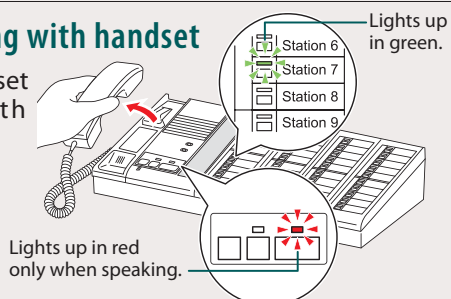



Corridor light with nameplates, 4 names
NIR-34

■ Using the system at the master station

● Answering with handset

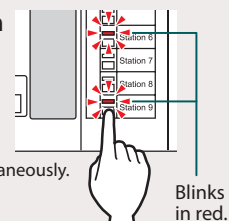
Lift the handset and talk with the caller.



● When receiving two or more calls*

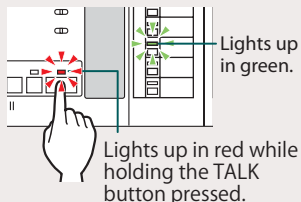
Push the station selector button to select the desired call.** Then, talk with the caller by using the handset or pressing the **TALK** button.

* Maximum of 10 calls can be received simultaneously.
** If this step is skipped, the first-arrived call is automatically selected.



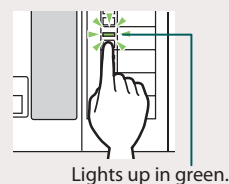
● Answering in open voice mode

Push and hold **TALK** to begin talking with the caller. Release **TALK** to listen.



● Calling a single sub station

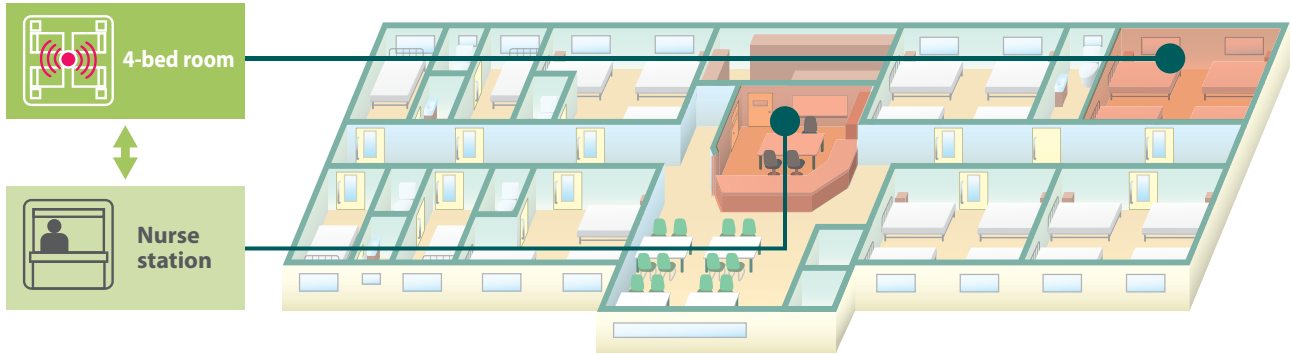
Push a call selector button to call the desired sub station. Then, talk with the caller by using the handset or pressing the **TALK** button.



Shared communication for multiple-occupa

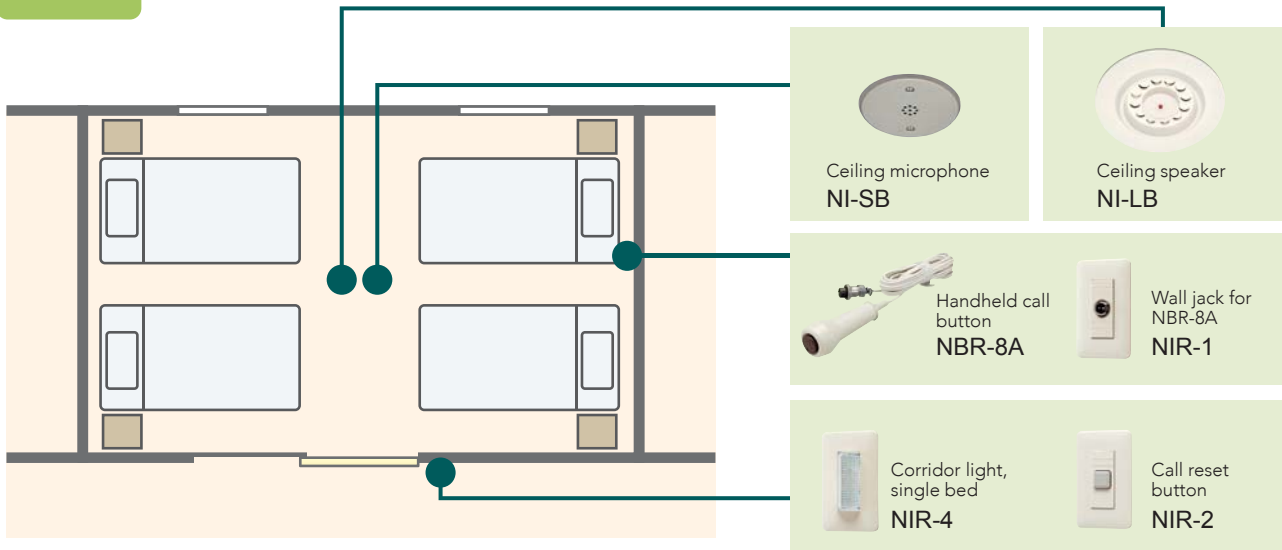
Multiple-user communication :

Communication system using a ceiling speaker and a microphone for communication with the entire room.

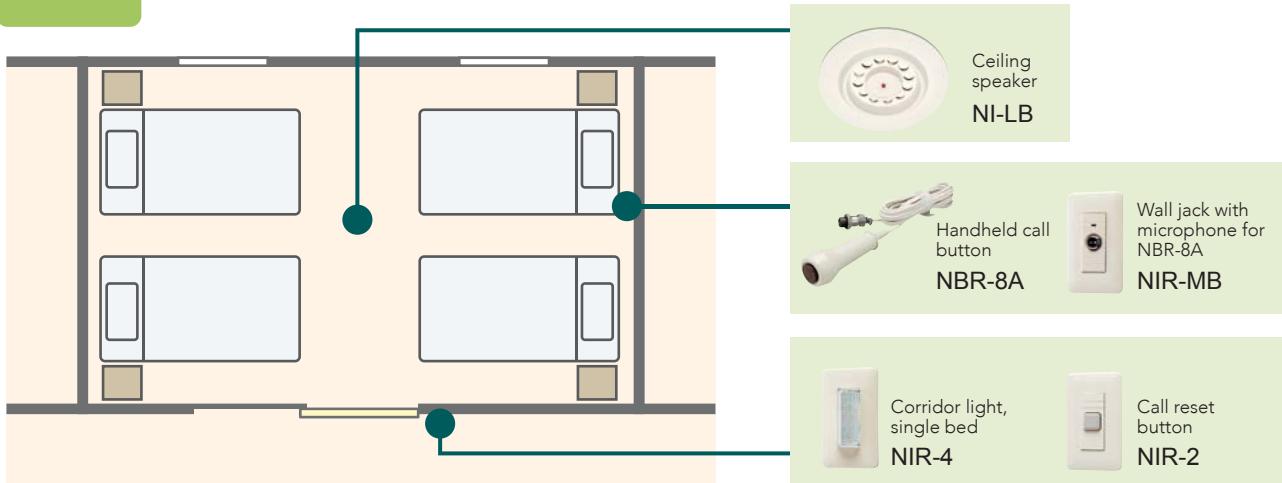


Examples of Equipment Application

4-bed room < Installation using ceiling microphone and ceiling speaker >

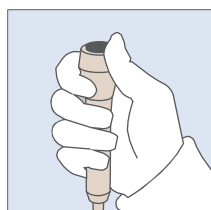


4-bed room < Installation using wall jack with microphone and ceiling speaker >



Emergency patient rooms is possible.

■ Features

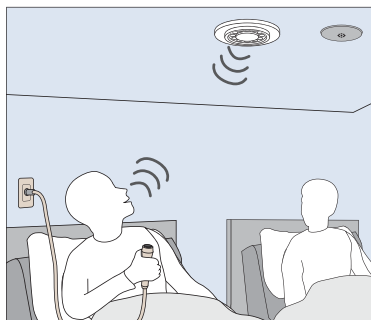


Push the call button.



Handheld call button
NBR-8A

The user speaks toward the ceiling microphone and hears the reply from the ceiling speaker.

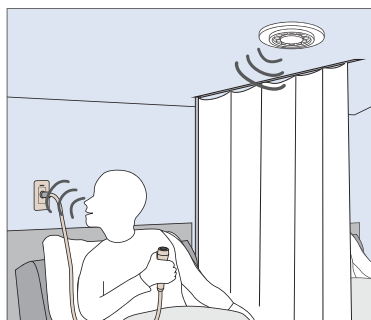


Ceiling speaker
NI-LB



Ceiling microphone
NI-SB

Communication is also possible by using a bedside wall jack with microphone instead of the ceiling microphone.



Ceiling speaker
NI-LB

Microphone

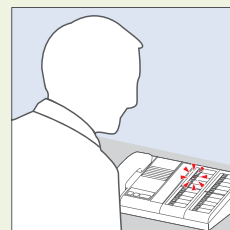


Wall jack with microphone for
NBR-8A
NIR-MB

The user speaks toward the wall jack and hears the reply from the ceiling speaker.



When a call is received, the indicator blinks to notify where the call is made from.



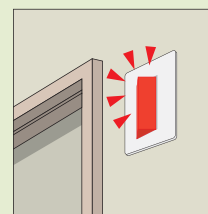
Master station

For more information on master station use see [Page 6](#).

Lighted lamps in corridor enable nurses to notice calls easily and respond to the patient quickly.

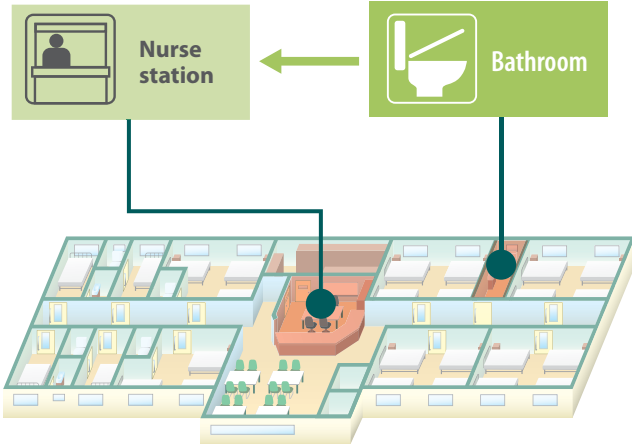


Corridor light, single bed
NIR-4

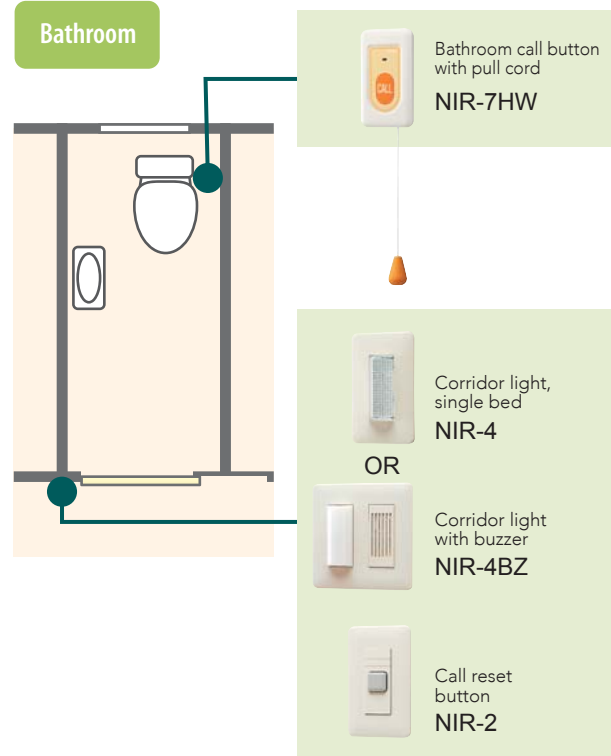


Quick response is possible in the case of emergencies in bathrooms.

Receiving a call is possible from a patient in a hospital bathroom.



■ Examples of Equipment Application

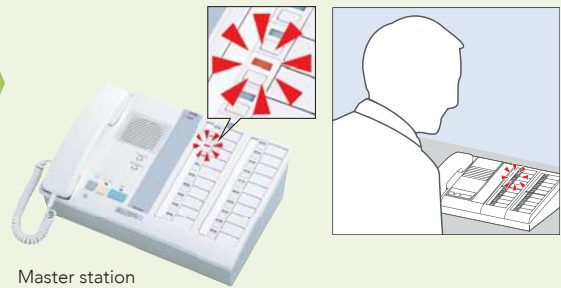


■ Features

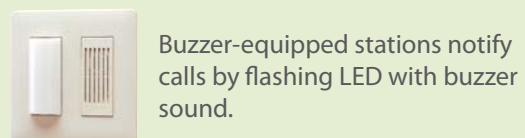
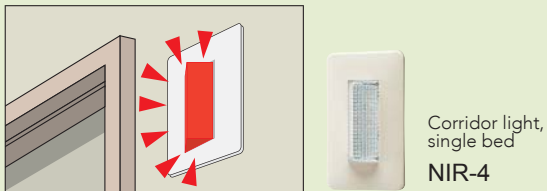
The user pushes the call button or pulls the cord to call for assistance. The call indicator lights up while calling.



When a call is received, the indicator blinks to notify where the call is made from.

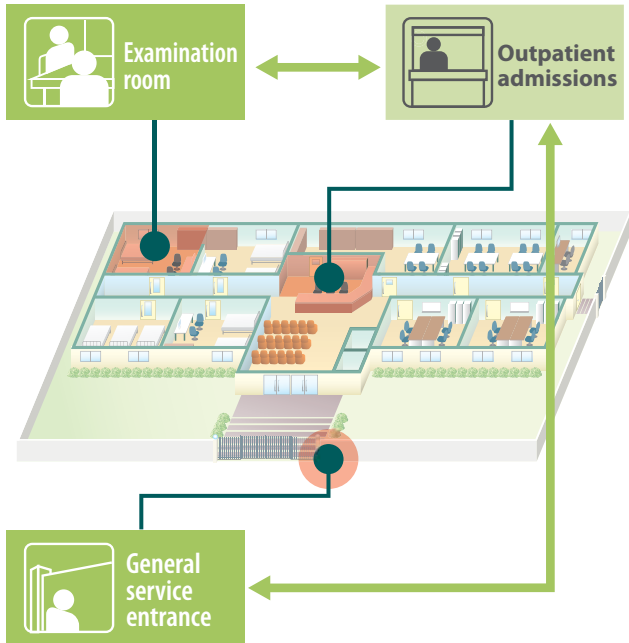


Lighted lamps in corridor enable nurses to notice calls easily and respond to the patient quickly.



General purpose sub stations for multiple purposes.

Desk mount sub station can be used for internal communication.



Examples of Equipment Application

Examination room

Sub station, surface mount NI-BA

General service entrance

Sub station, flush mount NI-JA

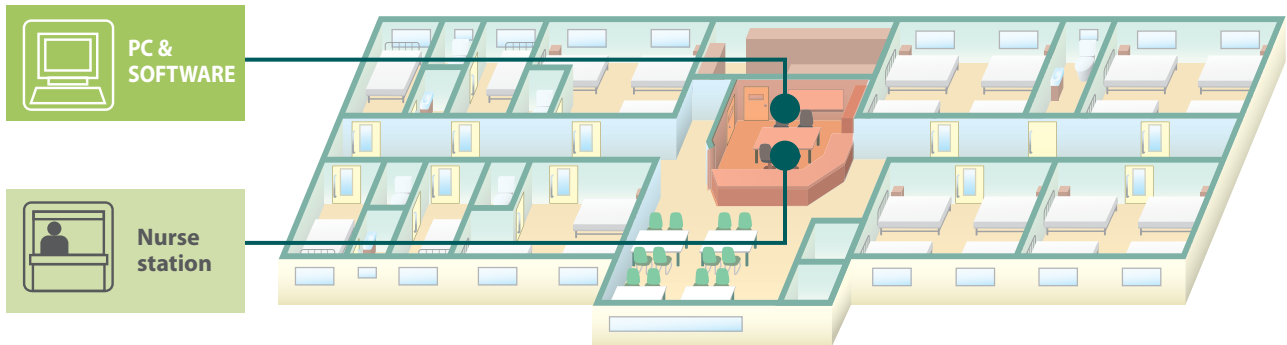
Flush mount outdoor station allows communication from outside the hospital.

Features

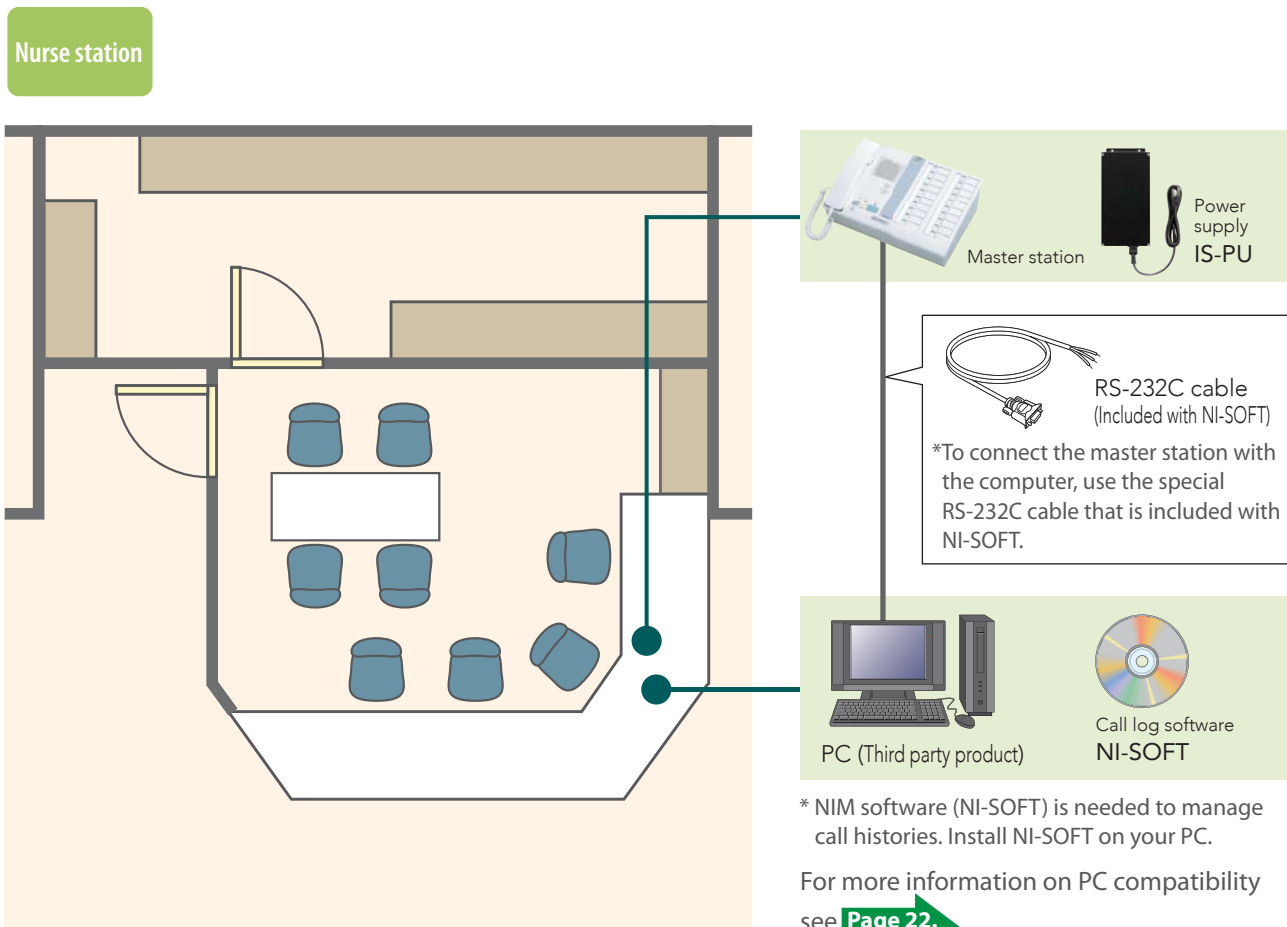
<p>Sub station, surface mount (NI-BA)</p> <p>New slim and smart design</p>	<p>Usage examples</p> <div style="display: flex; justify-content: space-around;"> <div style="text-align: center;"> <p>Staff rooms and common-use areas</p> </div> <div style="text-align: center;"> <p>Bedside</p> </div> </div>
<p>Sub station, flush mount (NI-JA)</p> <p>Vandalism- and weather-resistant – ideal for outdoor installations</p>	<p>Usage examples</p> <div style="display: flex; justify-content: space-around;"> <div style="text-align: center;"> <p>Courtyards</p> </div> <div style="text-align: center;"> <p>Communication for visitors</p> </div> </div>

Useful for tracing call history and improving

Connecting a computer to the master station helps to manage patient information, call history, and call-response data.

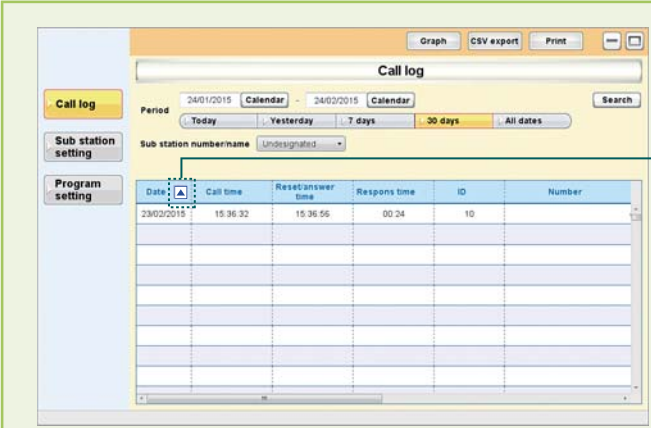


Examples of Equipment Application



service quality.

■ Features



List and search from call history

Date	Call time	Reset/answer time
------	-----------	-------------------

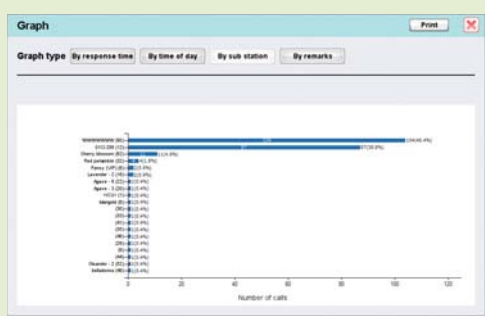
Call history can be searched by date, call time, sub station number, etc.

Name/Remarks
Seiji Yokoi, diabetes, check hourly
Taylor Wyatt, pneumonia, check daily
Isolation room, NO ENTRY

Additional information can be freely entered in the "Name/Remarks" field.

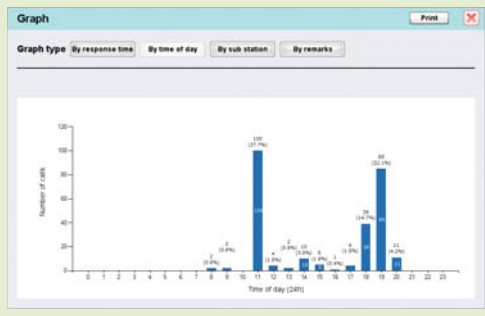
➔ Search results can be printed out or exported into CSV-format files.

Example of graph display



● Number of calls from sub stations

This allows nursing staff to see which patients have the highest number of calls, enabling management to schedule and prioritize care.



● Number of calls during different times of day

This enables verification of peak-time trends, enabling management to adjust staffing accordingly.



● Response time for calls

View the number of seconds from call to response, which can be useful in improving the level of service.

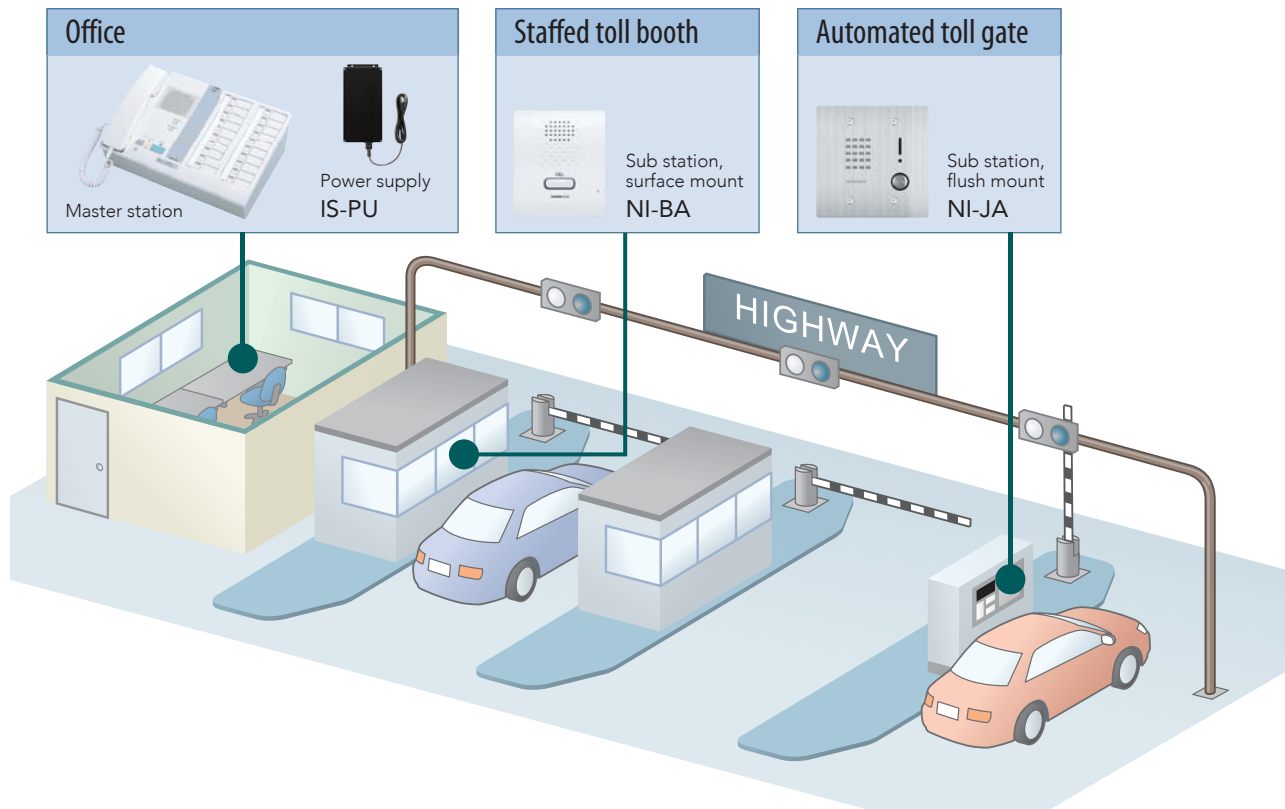
The image is simulated.

A communication system specialized for sim

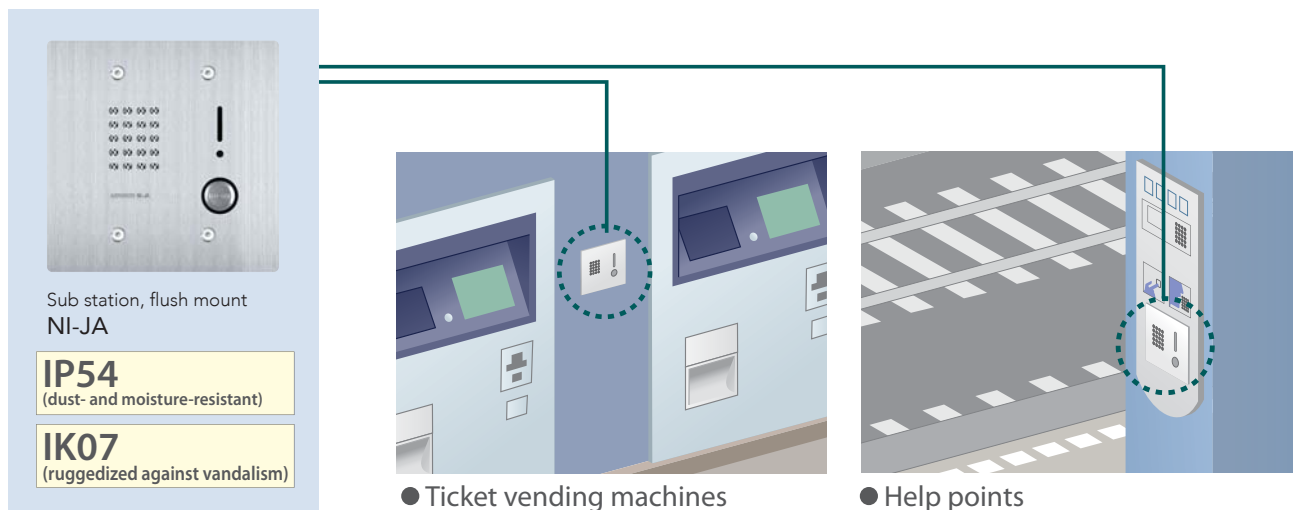
< Examples of System Configuration >

NIM system can be used for reliable communication. It can also be used in challenging conditions and noisy environments. This opens the door for various business and administrative applications.

Example of Installation at a Toll Gate

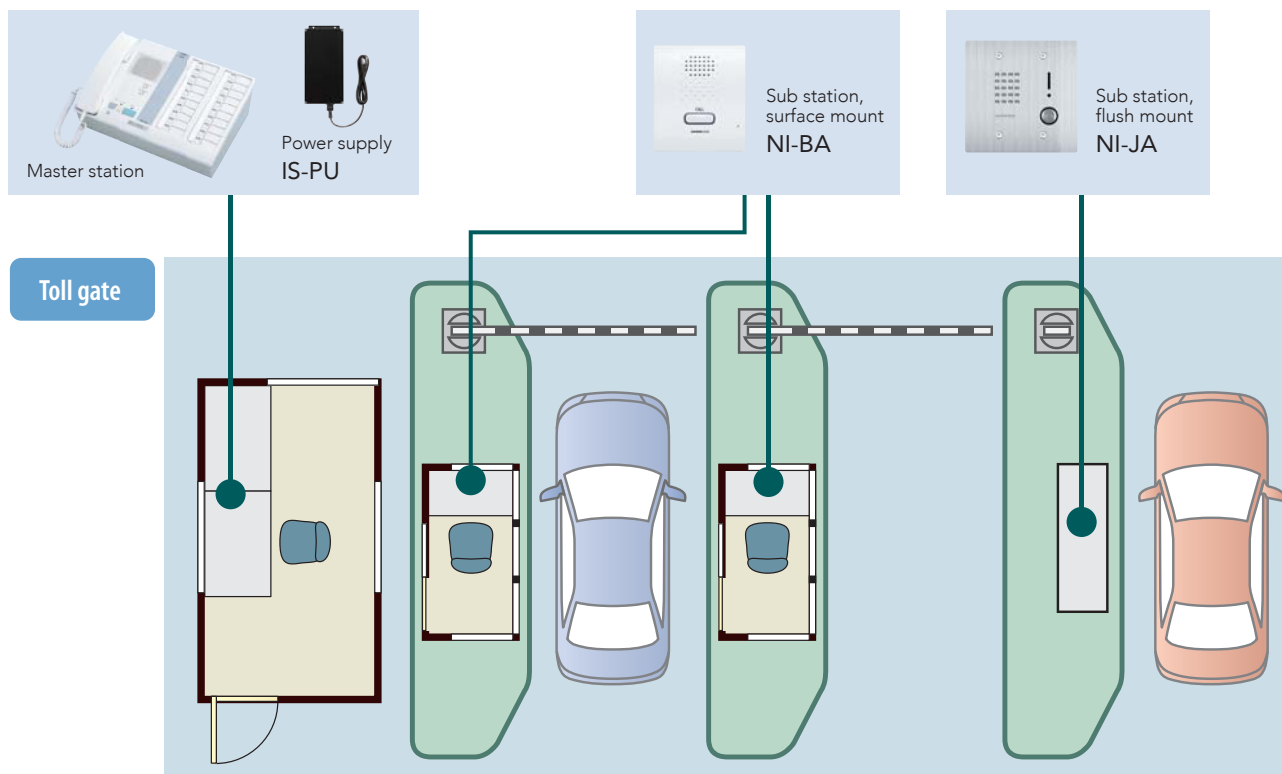


Other Examples of Installation (NI-JA)



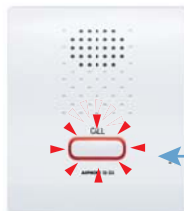
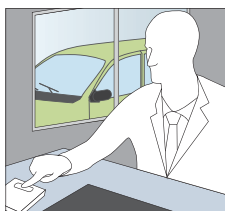
Example "call" and "communication" functions.

Examples of Equipment Application

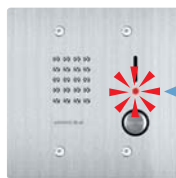
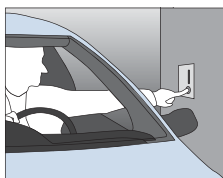


Features

Large button allows easy operation. Communication is enabled by a single push of the button.

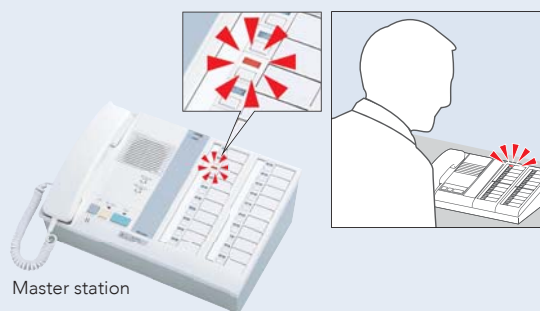


Flush mount sub station is weather- and vandalism-resistant.



The call indicator on the sub stations provides visual indication of call status. Lit while being called, off during communication.

When a call is received, the call indicator blinks to signify which booth is sending the call.



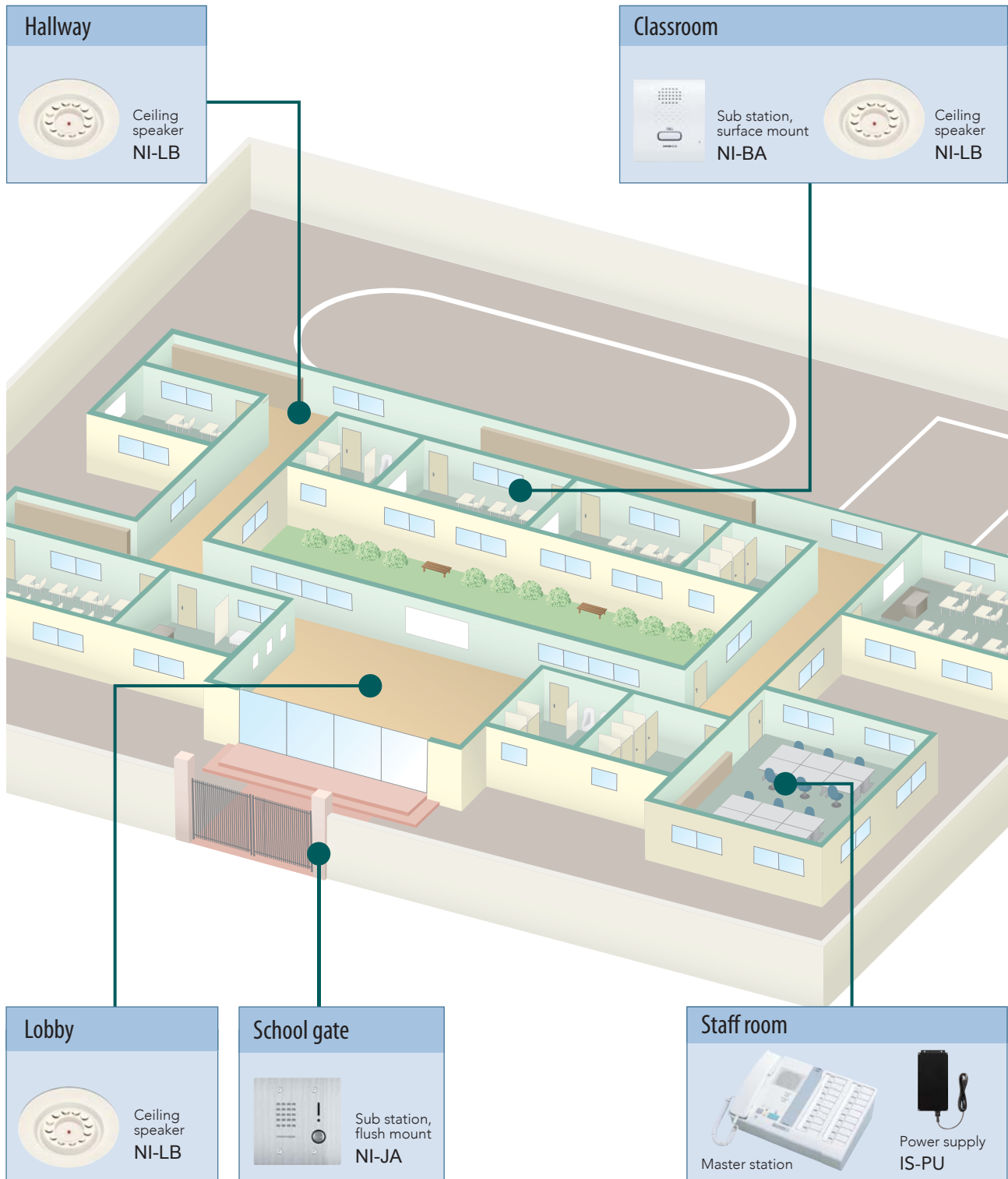
For more information on master station use see [Page 6](#).

NIM system can be used for communication

< Examples of System Configuration >

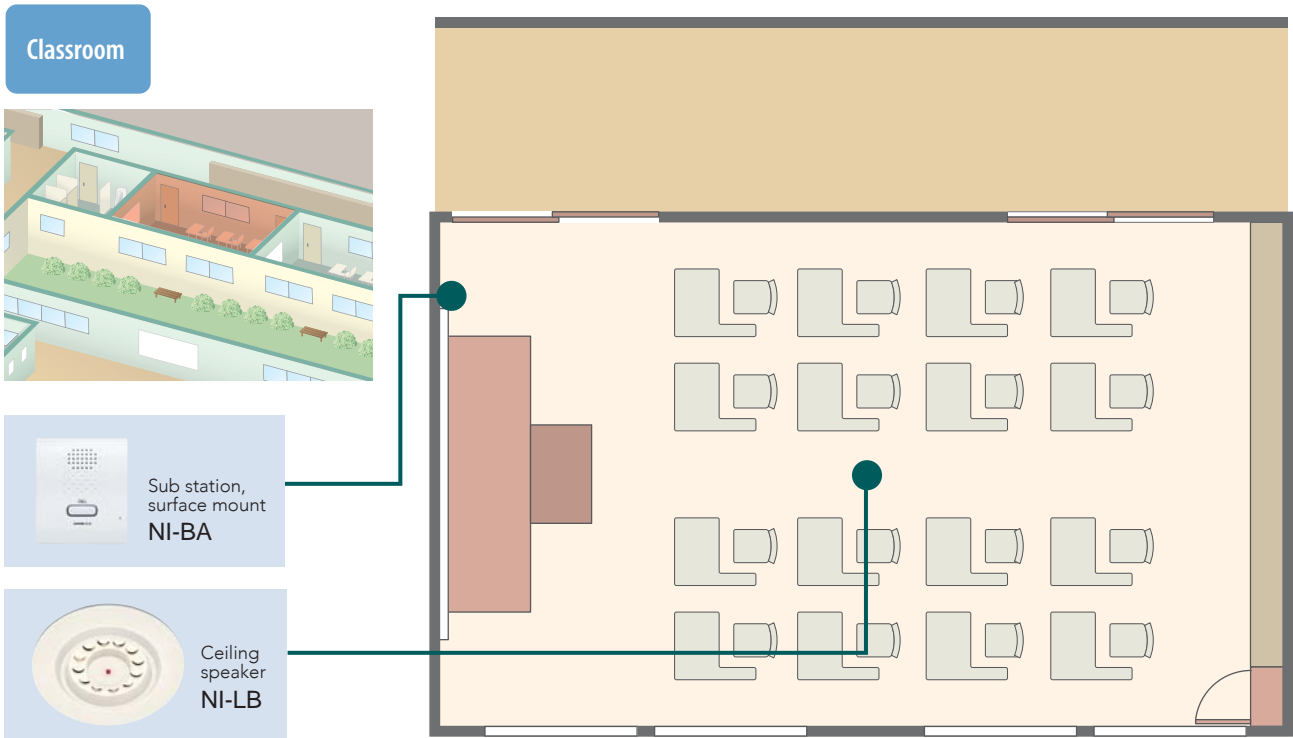
NIM system can be utilized to broadcast announcements to selected stations or all stations.

Example of Installation in a School



and broadcasting.

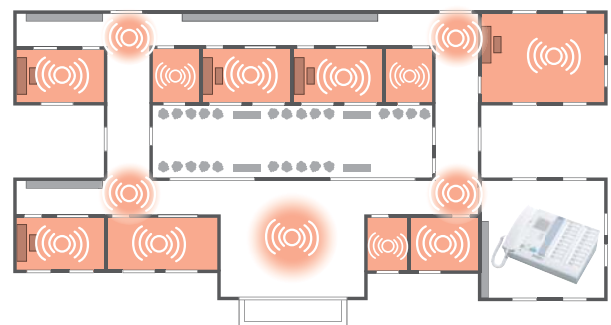
Examples of Equipment Application



Features

Broadcast to all stations

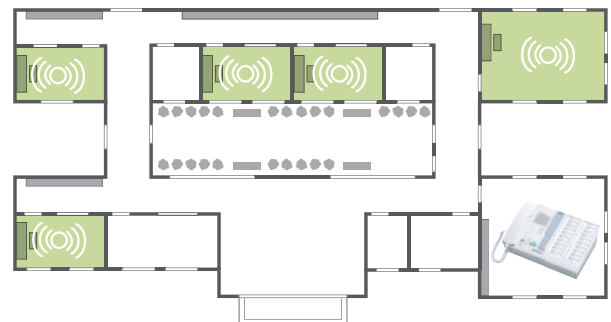
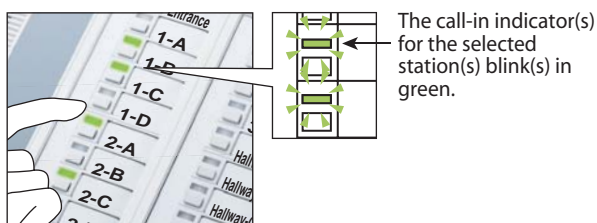
Broadcasting to all sub stations is possible.



A pretone is heard at all the sub stations before the broadcast.

Group broadcasts to selected stations

Broadcasts limited to selected classrooms are possible. Push the station selector button(s) for the target sub station(s).



Group broadcasts can be made to up to 5 sub stations.

Upgrade from an existing NEM system.

Handheld sub station

Original system (NEM system)

Privacy is difficult to maintain using ceiling sub station.



NIM system



- The handheld sub stations are equipped with a microphone and speaker, enabling communication with individual patients.
- Private communication helps to provide more detailed care of patients.

Desk mount sub station

Original system (NEM system)

The design does not meet current needs.

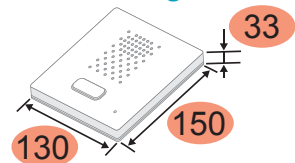


NIM system

- The system has been reborn with a stylish design, maintaining the same features.



Slim design



Note : When upgrading from NEM system to NIM system, all system components and wiring need to be changed.

Flush mount sub station

Original system (NEM system)

The previous sub station had limited application scope.



NIM system

- The new sub station is vandalism- and weather- resistant. This allows installation in a wider range of areas.



IP54
(dust- and moisture-resistant)

IK07
(ruggedized against vandalism)

Corridor light with nameplates

Original system (NEM system)

No identification of individual calls.



NIM system

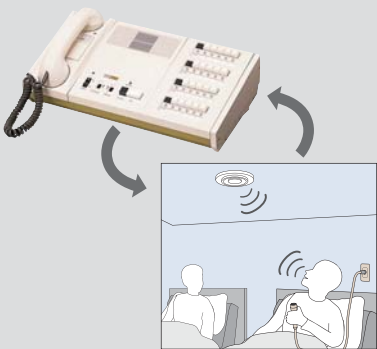
- Easy identification of calls, thanks to our new corridor lamp with nameplate.



Call log software

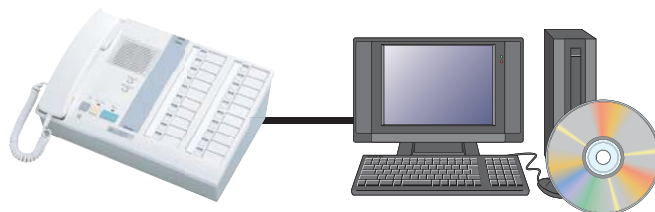
Original system (NEM system)

Simple communication.



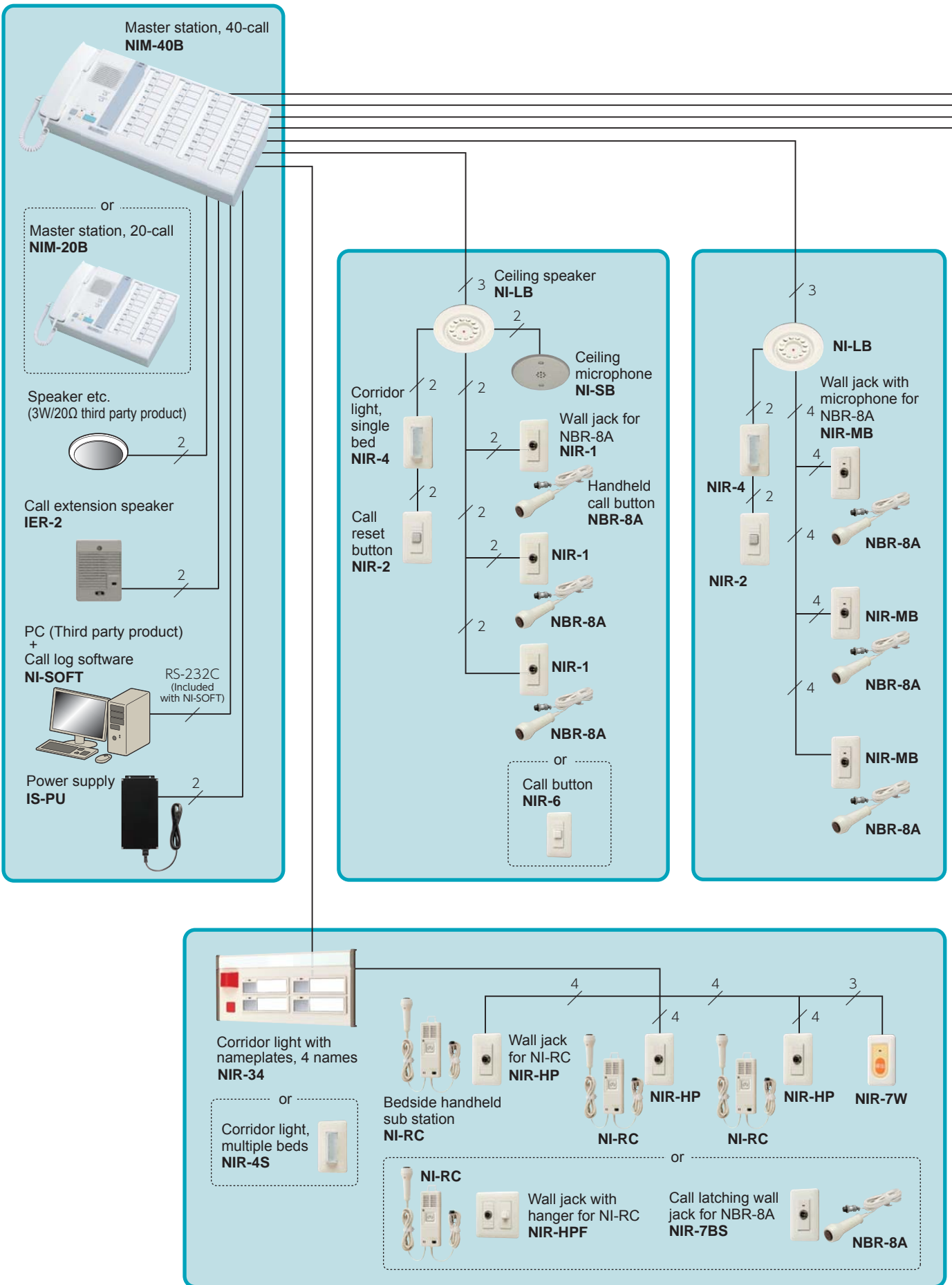
NIM system

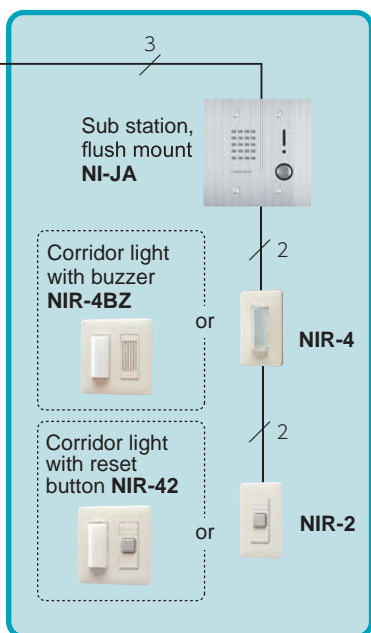
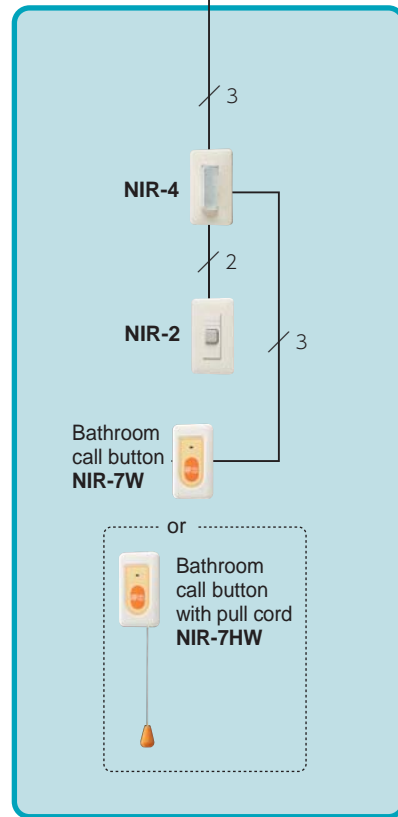
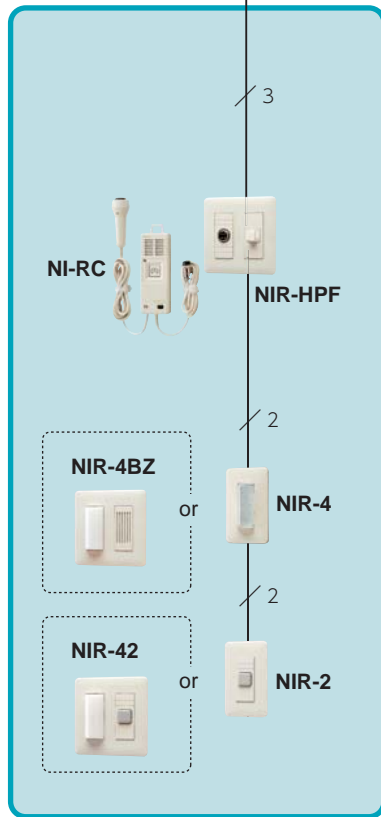
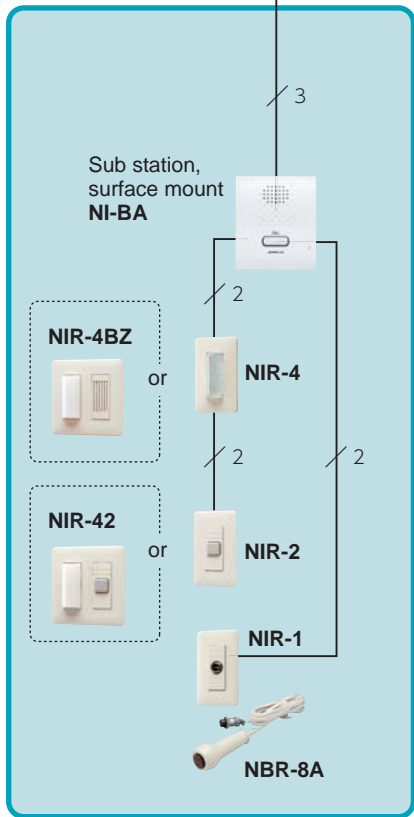
- Connectable to PC for call history, patient information, and call-response data. No need for an Internet connection. Using a RS-232C cable is enough for PC connection.



SYSTEM CONFIGURATION

System configuration example. Wiring method is subject to system configuration.





■ System capacity

The number of sub stations is subject to the type of master station.

Master station		Sub station (Qty)	Personal computer (Qty)
Model	Qty		
NIM-20B	1	20	1
NIM-40B	1	40	1
Master station, 60-call(*)	1	60	1
Master station, 80-call(*)	1	80	1

(*): Special order product

■ Wiring distance

	Wire diameter	Maximum distance
Master station - sub station	Ø0.65 mm (22 AWG) Ø0.9 mm (19 AWG)	130 m (490') 200 m (650')
Master station - power supply	Ø0.9 mm (19 AWG)	10 m (33')
Master station - call extension speaker (IER-2)	Ø0.9 mm (19 AWG)	50 m (165')

SYSTEM COMPONENTS

Master station



NIM-20B
Master station, 20-call



NIM-40B
Master station, 40-call

Power source: 48 V DC (supplied from the power supply)
Communication: Handset: Voice-actuated communication
Open voice: Push-to-talk (PTT)
Material: Panel: Flame resisting resin
Chassis: SPCC

* 60 or 80 call model is also available (special order product).

Call button, wall jack



NBR-8A
Handheld call button

Material: Flame resisting plastic



NIR-1
Wall jack for NBR-8A

Power source: Supplied from the master station
Mounting: Wall (flush)-mount
Electrical box: 1-gang box
Material: Plastic



NIR-MB
Wall jack with microphone for NBR-8A

Power source: Supplied from the master station
Mounting: Wall (flush)-mount
Electrical box: 1-gang box
Material: Plastic



NIR-7BS
Call latching wall jack for NBR-8A

Power source: Supplied from the master station
Mounting: Wall (flush)-mount
Electrical box: 1-gang box
Material: Plastic



NIR-6
Call button

Power source: Supplied from the master station
Mounting: Wall (flush)-mount
Electrical box: 1-gang box
Material: Plastic

Sub station



NI-RC
Bedside handheld sub station

Power source: Supplied from the master station
Communication: Open voice hands-free auto-voice actuation
Material: Plastic



NIR-HP
Wall jack for NI-RC

Power source: Supplied from the master station
Mounting: Wall (flush)-mount
Electrical box: 1-gang box
Material: Plastic



NIR-HPF
Wall jack with hanger for NI-RC

Power source: Supplied from the master station
Mounting: Wall (flush)-mount
Electrical box: 2-gang box
Material: Plastic

Ceiling speaker



NI-LB
Ceiling speaker

Power source: Supplied from the master station
Mounting: Flush-mount on the ceiling
Material: Plastic

Ceiling microphone



NI-SB
Ceiling microphone

Power source: Supplied from the master station
Mounting: Flush-mount on the ceiling
Material: Stainless steel



NI-BA
Sub station, surface mount

Power source: Supplied from the master station
Communication: Open voice hands-free communication
Mounting: Desktop use or wall (surface)-mount
Electrical box: 1-gang box
Material: Flame resisting resin



NI-JA
Sub station, flush mount

Power source: Supplied from the master station
Communication: Open voice hands-free communication
Mounting: Flush-mount
Electrical box: 2-gang box
Material: Front panel: Stainless steel
Main unit: Flame resisting resin
Remarks: Weather-resistant (Protection class: IP54,IK07)

Corridor light, reset button



NIR-4
Corridor light, single bed

NIR-4S
Corridor light, multiple beds

Power source: Supplied from the master station
Mounting: Wall (flush)-mount
Electrical box: 1-gang box
Material: Plastic



NIR-2
Call reset button

Power source: Supplied from the master station
Mounting: Wall (flush)-mount
Electrical box: 1-gang box
Material: Plastic



NIR-4BZ
Corridor light with buzzer

Power source: Supplied from the master station
Mounting: Wall (flush)-mount
Electrical box: 2-gang box
Material: Plastic



NIR-42
Corridor light with reset button

Power source: Supplied from the master station
Mounting: Wall (flush)-mount
Electrical box: 2-gang box
Material: Plastic



NIR-31
Corridor light with nameplate, 1 name



NIR-32
Corridor light with nameplates, 2 names



NIR-34
Corridor light with nameplates, 4 names

Power source: Supplied from the master station
Material: SPCC

Bathroom call button



NIR-7W

Bathroom call button

Power source: Supplied from the master station

Mounting: Wall (flush)-mount

Electrical box: 1-gang box

Material: Flame resisting resin

Remarks: Splash proof



NIR-7HW

Bathroom call button with pull cord

Power source: Supplied from the master station

Mounting: Wall (flush)-mount

Electrical box: 1-gang box

Material: Flame resisting resin

Remarks: Splash proof

Call extension speaker



IER-2

Call extension speaker

Power supply



IS-PU-UL

IS-PU-S

Power supply

Power source: AC 100 - 240 V, 50/60 Hz.

Power consumption: 120 W

(Secondary) Output voltage: DC 48 V

(Secondary) Output current: 2.1 A

Mounting: Stationary, wall-mount

(IS-RACK*) or rack-mount

(IS-RACK*)

Material: Steel plate

(*) IS-RACK: Consult an authorized Aiphone dealer for details.

PC application System requirements for PC



NI-SOFT

Call log software

Accessory : RS-232C cable

OS	Windows 7 Service Pack1 / Home Premium / Professional / Ultimate(32/64bit) Windows 8.1/ Pro (32/64bit)
Processor	3 GHz or higher
System memory (RAM)	2 GB RAM or higher
Hard drive	100 MB or more (Additional space is needed during installation.)
Requirements	<ul style="list-style-type: none"> •RS232C port installed on the PC or an add-in board •CD-R readable drive •A PC operable 24 hours a day •Display : 1024 (W) x 768 (H) or higher, 16-bit color or higher •Font : Arial •Run-time : Microsoft.NET Framework 4.5

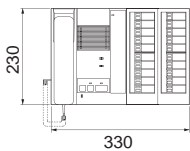
• The application may not run or may not operate correctly (such as freezes occurring) on a PC with specifications below the necessary requirements.

• We recommend using a PC that exceeds the basic system requirements.

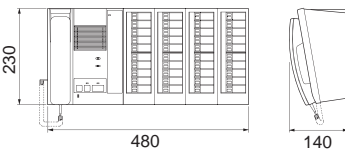
Microsoft and Windows are either registered trademarks or trademarks of Microsoft Corporation in the United States and/or other countries.

UNIT DIMENSIONS (mm)

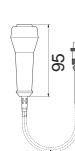
NIM-20B



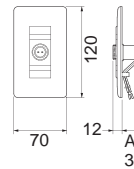
NIM-40B



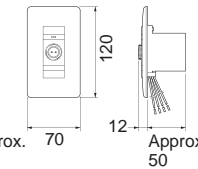
NBR-8A



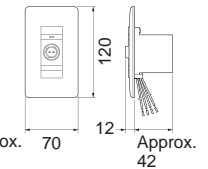
NIR-1



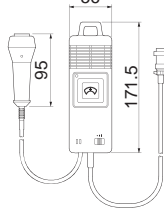
NIR-MB



NIR-7BS



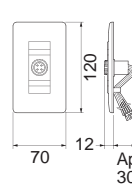
NI-RC



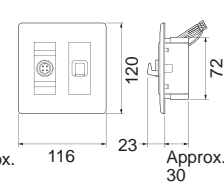
28



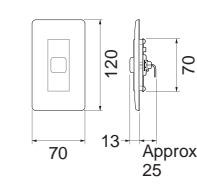
NIR-HP



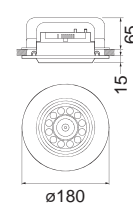
NIR-HPF



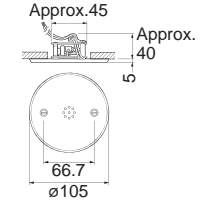
NIR-6



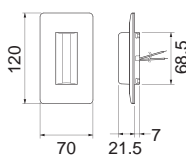
NI-LB



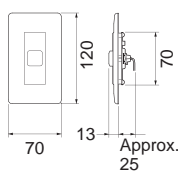
NI-SB



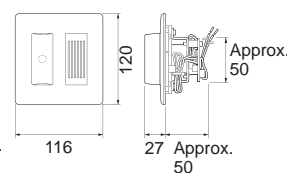
NIR-4, NIR-4S



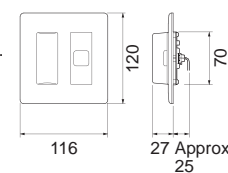
NIR-2



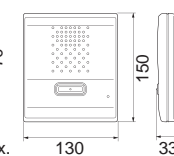
NIR-4BZ



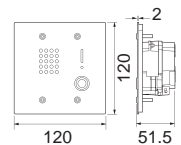
NIR-42



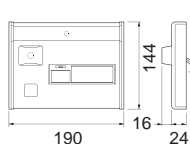
NI-BA



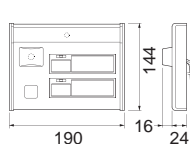
NI-JA



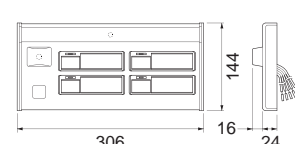
NIR-31



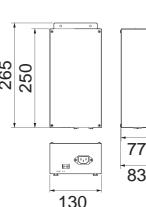
NIR-32



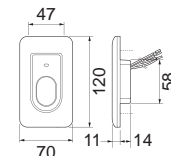
NIR-34



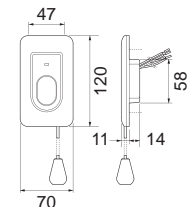
IS-PU



NIR-7W



NIR-7HW



*A gang box (not included) with a depth of the required value or higher is needed.

Distributed by :



 **AIPHONE**®
Providing Peace of Mind
<http://www.aiphone.net/>

NIM(E)1508A

All rights reserved. The design and specifications are subject to change without notice for improvement.

Printed in Japan (E)
NB58002AJZ